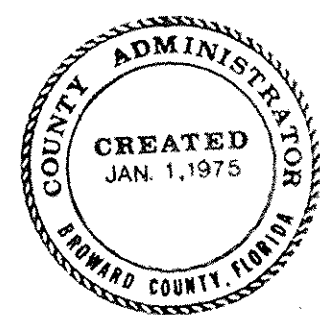
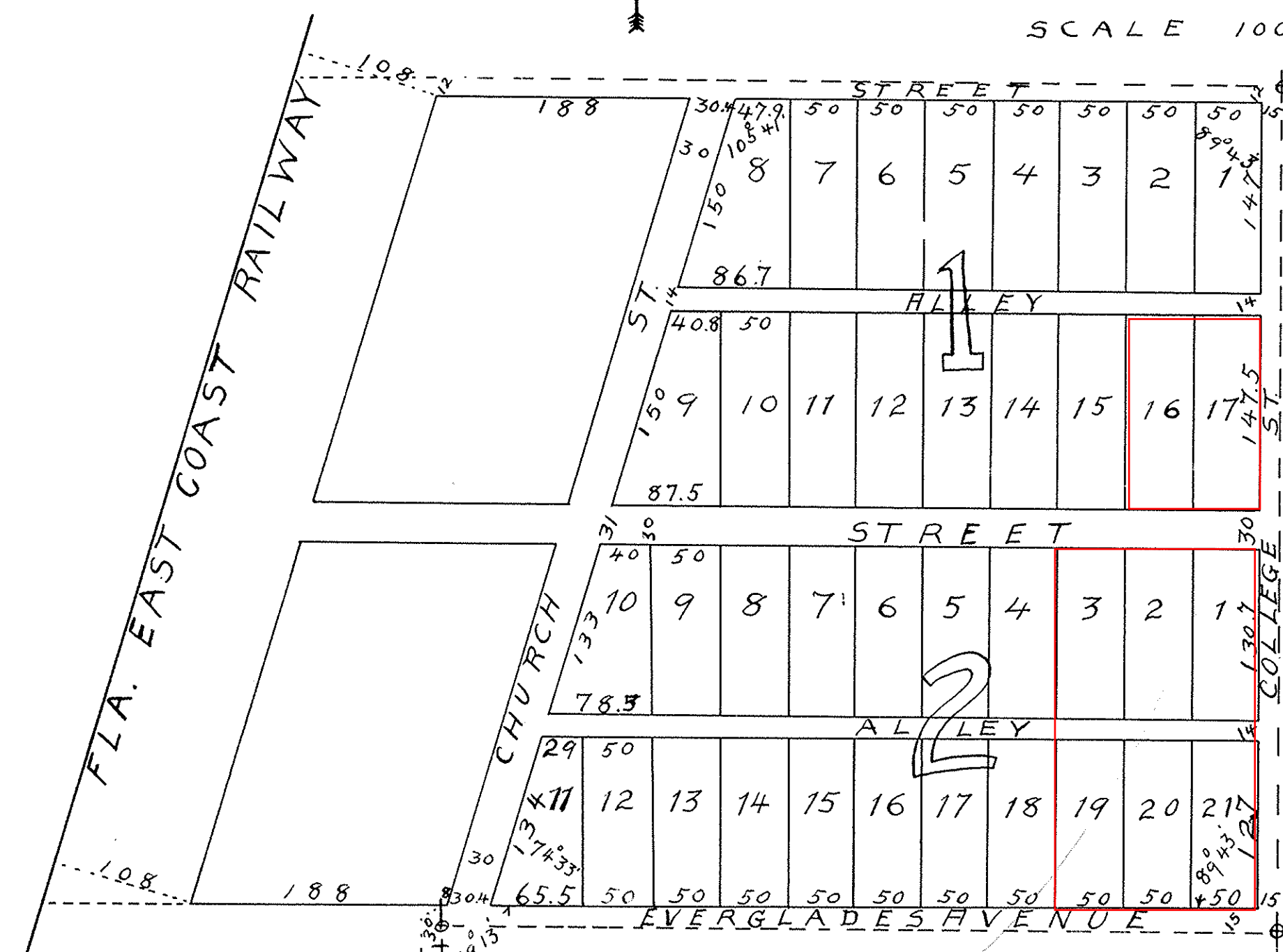


S MOAKS ADDITION
To
P O M P A N O

PART OF NE⁴ OF SW⁴ OF SE⁴ OF Sec 35
Township 48 S. R. 42 E

PALM BEACH COUNTY, FLORIDA

SCALE 100 FT. = 1 INCH.



STATE OF FLORIDA
COUNTY OF BROWARD

I HEREBY CERTIFY that this is a true and correct copy of a map or plat as the same appears of record in Plat Book 5 at Page 10 of the public record of Broward County Florida. WITNESS my hand and official seal in the City of Fort Lauderdale, FL this 26 day of Mar. 1986.

F. J. JOHNSON, County Administrator
By F. J. Johnson C.C.

NOTED.
FORWARDED.
That this is a true and correct copy of the same appears of record in the public record of Broward County Florida. WITNESS my hand and official seal in the City of Fort Lauderdale, FL this 26 day of Mar. 1986.

By _____ to _____

KNOW ALL MEN BY THESE PRESENTS that the undersigned L. R. SMOAK has caused to be surveyed and platted this map of the subdivision of the NE⁴ of SW⁴ of SE⁴ of Sec 35 T/P 48 S. R 42 E in Palm Beach County State of Florida and that he does hereby dedicate to the perpetual use of the public the Roads and highways shown thereon, reserving to himself his successors and assigns, the reversion or reversions thereof whenever discontinued by law in witness whereof the said L. R. SMOAK has signed these Presents

and affixed his Seal at West Palm Beach, Florida. L. R. SMOAK Seal
This 26th day of July A.D. 1913

Signed, sealed and delivered
in presence of Percy H. Adams
E. W. Hunt

State of Fla.
County of Palm Beach

Before me personally appeared, L. R. Smoak, to me well known acknowledged to and before me in that he executed the foregoing instrument for the purposes there in expressed.

Witness my hand and official seal at West Palm Beach Fla. this 26th day of July A.D. 1913. NP

State of Florida
County of Palm Beach

I hereby certify that the measurements and angles of Lots and Roads as shown on this Map conform to actual measurements taken on this Tract by me and they are correct & true & accurate to the best of my knowledge & belief

State of Florida.

County of Palm Beach

Before me personally appeared Geo. A. Long, to me well known, acknowledge to and before me that he executed the foregoing instrument

Witness my hand and official seal at West Palm Beach, Fla. this 22nd day of July A.D. 1913



Geo. A. Long
Notary Public My commission expires
October 29, 1914.

STATE OF FLORIDA
COUNTY OF PALM BEACH } 55
This instrument was filed for record on the
day of Aug 1913, and duly
recorded on the
page 10 of Book 5 of Public
RECORD VERIFIED,
Geo. A. Long
Notary Public
My commission expires
October 29, 1914.